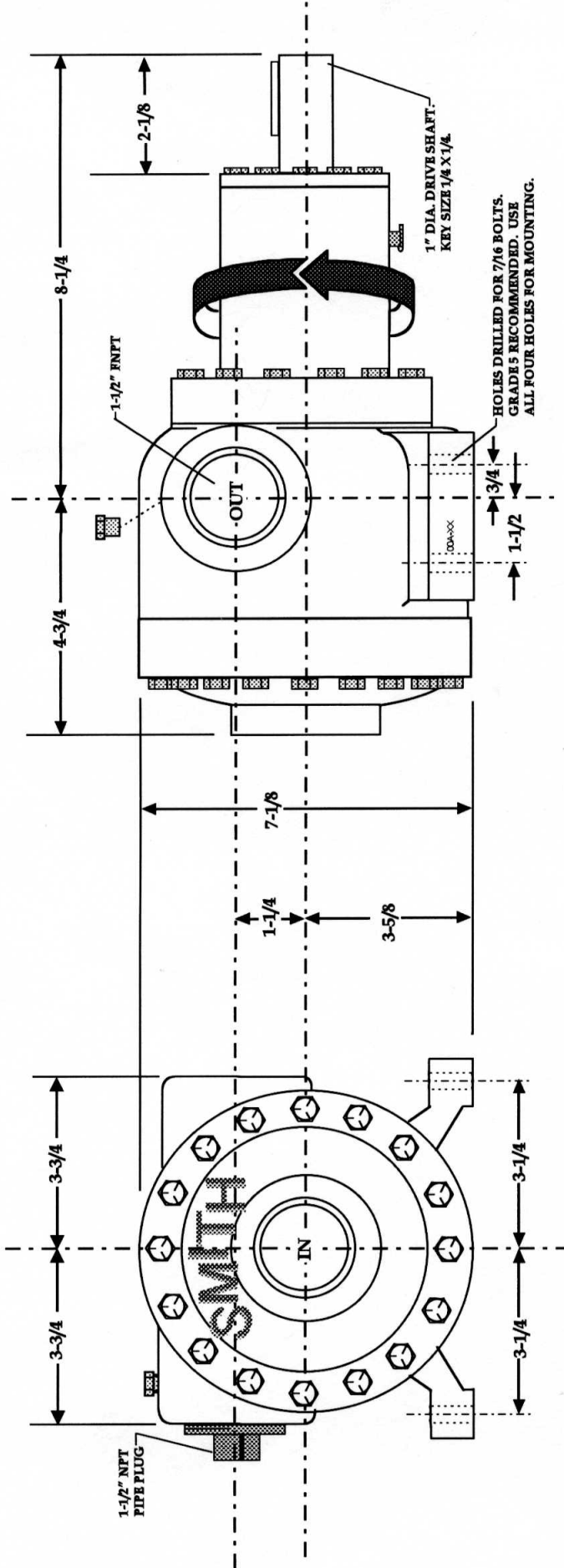


DRAWING NOT TO SCALE

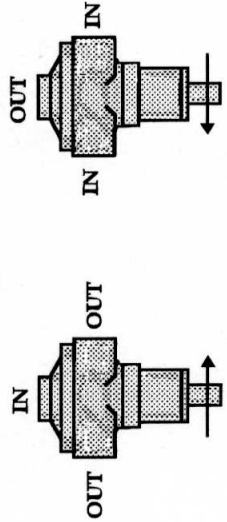


NOTE: THIS DRAWING IS INTENDED FOR USE WITH MODELS "TC-1044H", "TC-1044H NS", "TC-1044H SA", "TC-1044H NSSA", "TC-1044HL", "TC-1044HL NS", "TC-1044HL SA", "TC-1044HL NSSA", AND SPECIAL "S" VERSIONS OF THE ABOVE, WITH OR WITHOUT THE "Z" OPTION. ALL PORTS ON THESE MODELS ARE THREADED 1-1/2" FNPT. ALTHOUGH THEY ARE REVERSIBLE, AS SHOWN IN THE SKETCHES TO THE RIGHT, THEIR INSTALLATIONS ARE MOSTLY AS IN THE DRAWING, WITH THE INLET THROUGH THE GEAR END COVER. ABOVE THIS MODEL TYPE IS RUNNING IN THE USUAL "CLOCKWISE" DIRECTION, AND REQUIRES AN APPROVED PIPE PLUG INSTALLED IN THE NON-UTILIZED MAIN HOUSING PORT.

ONE METAL PIPE PLUG SIMILAR TO THAT SHOWN ABOVE, IS UTILIZED DURING INITIAL FACTORY TESTS, AND AFTERWARD IS LEFT LOOSELY INSTALLED IN THE HOUSING TO HELP PREVENT ENTRANCE OF MOISTURE AND DEBRIS DURING SHIPMENT AND STORAGE. DO NOT INSTALL THIS PIPE UNLESS IT IS ALLOWED UNDER CURRENT APPLICABLE REGULATIONS. BE SURE TO CAREFULLY READ AND FOLLOW ALL SAFETY CODES AND PRACTICES INVOLVING THE USE OF THIS LIQUID TRANSFER PUMP, ESPECIALLY WHEN USED TO HANDLE FLAMMABLE LIQUIDS, SUCH AS LPG. CONTACT THE FACTORY IF THERE ARE ANY QUESTIONS.

THE "TC-1044H" MODELS SHOULD NOT BE CONFUSED WITH THE "MC-1044" MODELS WHICH ARE SHOWN IN DIMENSION DRAWING "DMC-1044H". THEY ALL LOOK THE SAME. THEY ALL HAVE IDENTICAL EXTERNAL DIMENSIONS. HOWEVER, THEY DIFFER INTERNALLY, AND DO NOT HAVE THE SAME PORTING CONFIGURATIONS. THE "TC-1044H" IS A LOW SPEED MODEL TYPE, DESIGNED TO BE DRIVEN BY PTO, BELT, OR GEAR DRIVES, TO 900 RPM. THE "MC-1044 SERIES" ARE HIGH SPEED MODELS DESIGNED TO BE DRIVEN AT ELECTRIC MOTOR SPEEDS, TO 1800 RPM. SEE BULLETIN "AL-3" OR CONTACT THE FACTORY FOR ADDITIONAL INFORMATION.

TC-1044H Model 1 Types



ALL DIMENSIONS IN INCHES TO ±1/16 TOLERANCE.

DIMENSION DRAWING

SMITH MODEL TYPE TC-1044H

SMITH PRECISION PRODUCTS CO.

1299 LAWRENCE DRIVE

NEWBURY PARK, CA 91320

RSS 5-11-00

DTC-1044H